

GLOBAL LEADER

YEUNGJIN UNIVERSITY



주문식교육의 산실
영진전문대학교

Yeungjin Statistics

As of April 2020

Location

Daegu

(Bokhyeon Campus)

Chilgok

(Global Campus)



Daegu, the third largest city with a population of 2.4 million
· Seoul <-> Daegu 2 hrs by KTX bullet train (one-way)
· Busan <-> Daegu 40 mins by KTX bullet train (one-way)

Foundation

March 12, 1977



Number of Students

7,988



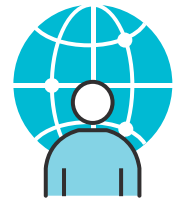
Male
5,399



Female
2,589

Number of International Students

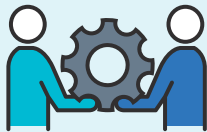
426



Total Number of Staff

511

335 Korean Faculty
43 Foreign Faculty
133 Administrative Staff



University Facilities

Bokhyeon Campus (Main)

Global Campus (Satellite)



International Partner Universities and Institutions

Institutions **212**
Countries **18**



Number of Schools & Departments

13



Campus Size

1,391,512 m²

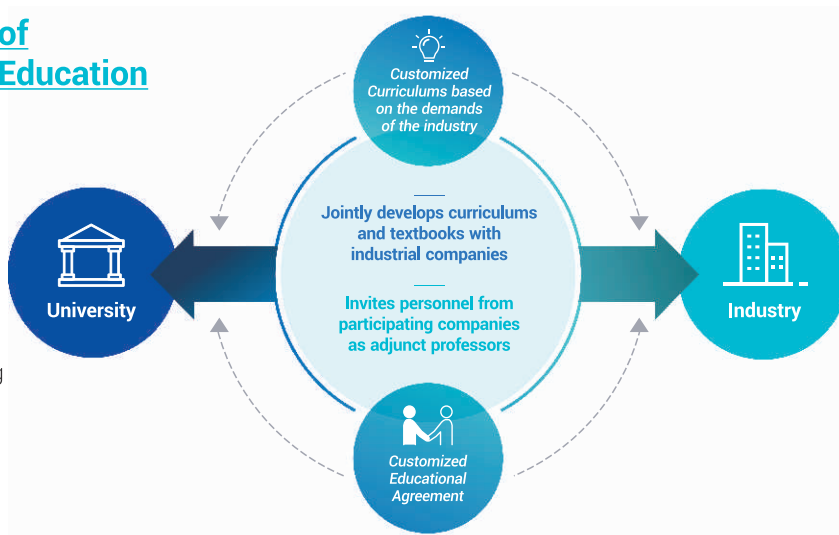
343.85 acres



Why Yeungjin?

01 The Pioneer of Customized Education

Customized Education was first created by Yeungjin University. The Educational Curriculum is modeled on the requirements and demands of industry-leading companies, incorporating them into a customized educational system.

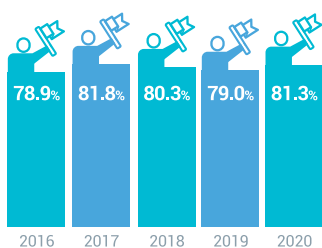


02 No.1 Korean Employment Rate No.1 International Employment among Korean Universities

02
03

Domestic Employment Rate in the Past 5 Years

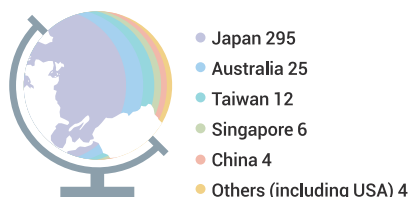
(Reference : Ministry of Education)



* Statistics confirmed every 2 years.

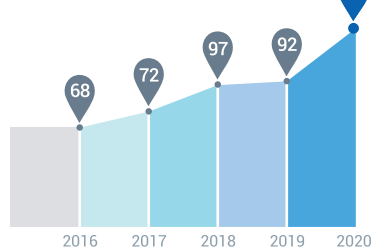
Graduates Hired Internationally in the Past 3 Years [by country]

346 employers from 9 countries



Graduates Hired Internationally in the Past 5 Years

(Reference : Ministry of Education)



* Statistics confirmed every 2 years.

03 Best Support System for International Students

Intensive Korean Language Education Curriculums

Special Korean language classes are provided during each semester and vacation for international students' language skill development and life adjustment.

English Track Programs

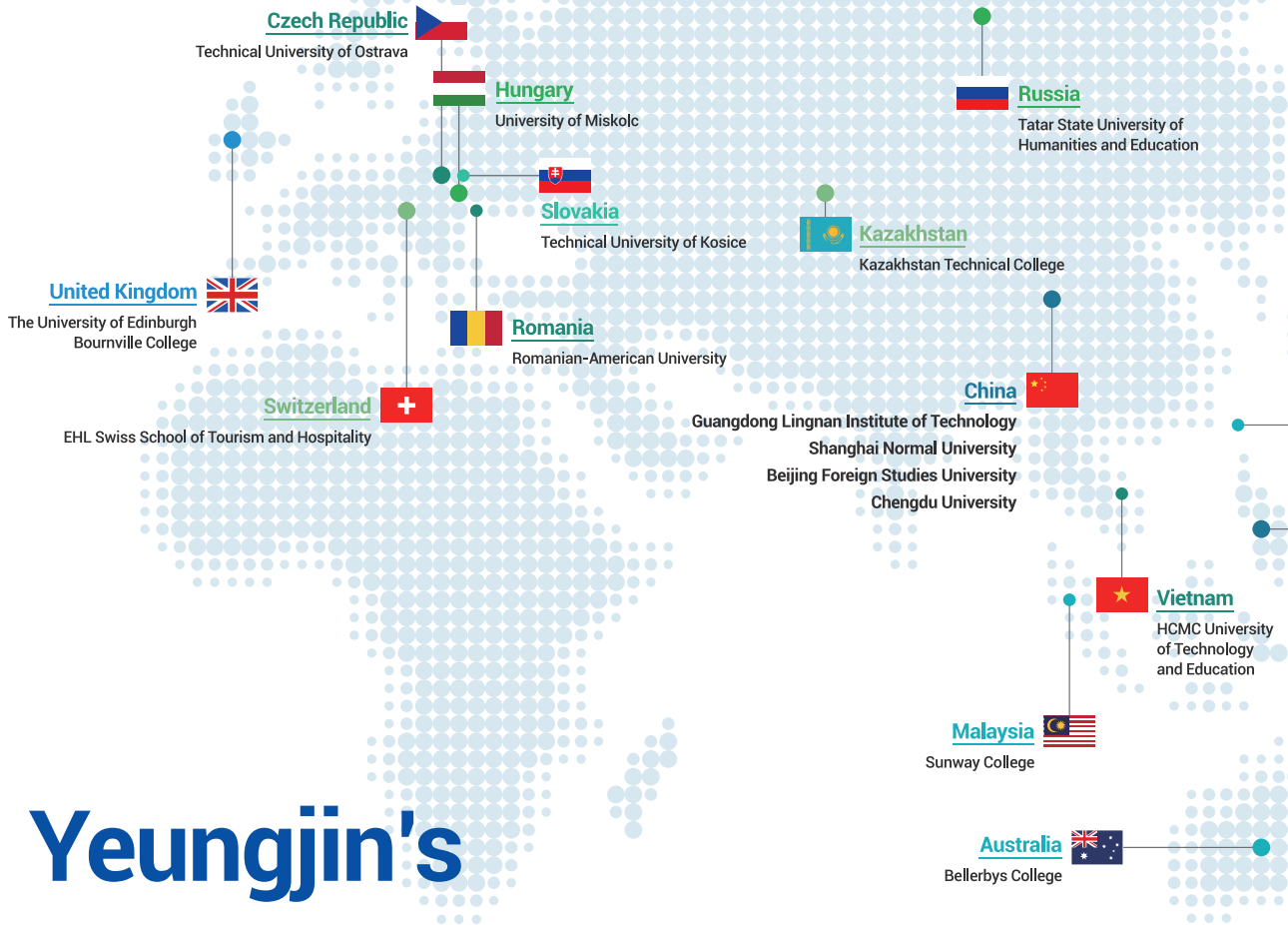
The Schools of Computer Aided Mechanical Engineering, ICT Semiconductor & Electronics, Business, and Hotel, Airline Service & Global Tourism offer an English Track Program to develop global talent.

Excellent Global Programs

Cultural experience programs, industry tour programs, and buddy programs are provided for international students.

Best Scholarships Offered

Yeungjin provides numerous scholarships for international students with excellent academic ability and language skills (Korean and English).



Yeungjin's Powerful Network

International Partnership

Australia

Bellerbys College
University of the Sunshine Coast
The University of Queensland
VIVA International College
University of Southern Queensland

Canada

Ashton College
Centennial College
St. Lawrence College

China

Heilongjiang College of Water Conservancy University
Tianjin University
Harbin University of Science And Technology
Qingdao Feiyang University
Qingdao Private University
Beijing Language and Culture University
Shanghai Normal University
Nanjing Normal University
Wuxi Vocational Institute of Commerce
Shanghai Business and Information College
Yichun Vocational Technical College
Weihai Vocational College
Yunnan University
Shanxi Vocational and Technical College
Shenzhen Polytechnic
Guangzhou Lingnan Education Group
Weifang Business Vocational College
Guangdong Lingnan Institute of Technology
Guangdong Lingnan Advanced Technical School
Jinan Engineering Vocational Technical College

Dalian Vocational & Technical College
Liaoning Provincial College of Communications
Bohai Shipbuilding Vocational College
Shenzhen Polytechnic
Shandong Institute of Commerce And Technology
Guangxi Polytechnic Vocational Technical School
Beijing Qiushi Vocational School
Shijiazhuang Tourism School
Guangxi Polytechnic Vocational Technical School
Guangdong Lingnan Institute of Technology
Shanxi Taiyuan Technician College
Huaihai Institute of Technology
Beijing Information Technology College
Yichun Vocational Technical College
Shanghai Normal University
Beijing Foreign Studies University
Southwestern University of Finance and Economics
Nanjing Chemical Industry Technician College
Chengdu University

Czech Republic

Technical University of Ostrava
The University of Finance and Administration

Hungary

University of Miskolc
Kecskemét College

Japan

Fukuoka Institute of Technology
ASO Foreign Language Tourism and Patisserie College

Hiroshima Bunka Gakuen Two-year College
Seika Women's Junior College
Fukuoka International University
Ashiya University
Ohtsubo Clinic and TOHTO College of Health Sciences
Nihon Wellness Sports University
National Institute of Technology, Ube College
IT College Okinawa
Okinawa School of Foreign Languages
National Institute of Technology, Kitakyushu college
Kori Nevers Gakuin Junior High School / Senior High School
J. F. Oberlin University
Kanto Gakuin University

Kazakhstan

Kazakhstan Technical College

Malaysia

Sunway College
INTI International College Subang
BERJAYA University College
Kwang Hua Private High School
Tunku Abdul Rahman University College

New Zealand

Ara Institute of Canterbury

Philippines

Commission on Higher Education
Nueva Ecija University of Science and Technology
Don Honorio Ventura State University



Japan

Kanto Gakuin University
J. F. Oberlin University
National Institute of Technology, Ube College
IT College Okinawa
Okinawa School of Foreign Languages

Taiwan

National United University

Philippines

Tarlac State University

Canada

Ashton College
St. Lawrence College
Centennial College

United States of America

Purdue University Northwest
University of Wisconsin-River Falls
University of Wisconsin-Stout
Northern Illinois University
University of Colorado Colorado Springs
Niagara University

New Zealand

Ara Institute of Canterbury

Pampanga Agricultural College
Tarlac State University
National Economic and Development Authority
Department of Science and Technology
Bulacan State University
President Ramon Magsaysay State University
Bataan Peninsula State University
Bataan State College
Tarlac Agricultural University
Palompon Institute of Technology
Tiburcio Tancinco Memorial Institute of Science and Technology
Leyte Institute of Technology
Naval Institute of Technology
Bulacan Agricultural State College
Aurora State College of Technology
Leyte Normal University
Laguna State Polytechnic University
Cavite State University
Samar State University
Southern Leyte State University
Northwestern Mindanao State College of Science and Technology
University of Rizal System
Samar State College of Agriculture and Forestry
Baliuag University
University of Perpetual Help System DALTA
Lyceum of the Philippines University
University of Baguio
Holy Angel University
Trinitas School of Nursing
Far Eastern University
Central Colleges of the Philippines
Jose Rizal University

Fund for Assistance to Private Education
The Manila Times College
Romarinda International School
Trinity University of Asia

Romania

Romanian-American University
The Technical University of CLUJ-NAPOCA

Russia

Tatar State University of Humanities and Education
Mari State University
Omsk State Pedagogical University
Obninsk Institute for Nuclear Power Engineering
Moscow Polytechnic University
Institute of Economics, Management and Law
Kalmyk State University

Slovakia

Technical University of Kosice
University of Zilina

Switzerland

EHL Swiss School of Tourism and Hospitality

Taiwan

National United University

United Kingdom

The University of Edinburgh
Bournville College

Westminster Kingsway College

United States of America

Pacific States University
Methodist College
Doane University
Mercy College
College of Southern Nevada
Lake Washington Institute of Technology
Southeast United States Korean Chamber of Commerce
Atlanta Technical College
Lorain County Community College
University of Colorado Colorado Springs
Kapi'olani Community College
Portland Community College
Austin Community College
Everett Community College
Bloomfield College
Purdue University Northwest
Northern Illinois University
University of Wisconsin-Stout
University of Wisconsin-River Falls
Troy University
Niagara University

Vietnam

HCMC University of Technology and Education
University of Danang
Hanoi National University of Education
National University of Civil Engineering
Hanoi Architectural University

School of Hotel, Airline Service & Global Tourism

✓ Korean Translation and Interpretation Major

Program for students who want to study Korean language to become an interpreter and translator.

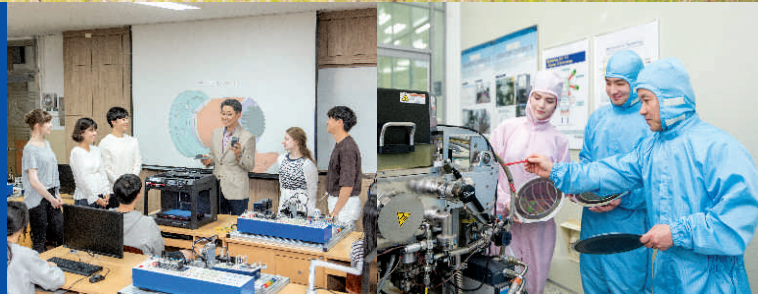


Schools & Departments (English Track)

- ✓ School of Computer Aided Mechanical Engineering
- ✓ School of ICT Semiconductor & Electronics
- ✓ School of Hotel, Airline Service & Global Tourism
- ✓ School of Business

English Track

The programs with English courses for students who are proficient in English.



School of Computer Aided Mechanical Engineering

School of ICT Semiconductor & Electronics



School of Hotel, Airline Service & Global Tourism

School of Business



Academics

Field of Study	Schools & Departments	Major	Duration (years)		English Track	Applicable to International Students
			Associates	Bachelors		
Engineering	Computer Information	Computer Programming	3	1	X	0
		Web Database				
		Smart Game Contents				
	Computer Aided Mechanical Engineering	· CAD/Mechanical Design	2	2	0	0
		· Smart CAD/CAM				
		· Petrochemical Plant Engineering				
		· Robot Automation System				
	ICT Semiconductor & Electronics	· Electronic Information	2	2	0	0
		· IT Device-Material				
		· Solar & Semiconductor				
Electrical Engineering	· Smart Factory	2	2	X	0	
	· Smart Grid					
Architecture & Interior Design	· Architecture System	2	-	X	0	
	· Interior Design					
Military NCOs	· Military Electronic Communication	2	2	X	X	
	· Medical/Combat Specialty NCO					
	· Aviation Maintenance					
Contents Design	· Visual Communication & Media Design	2	-	X	0	
	· Online Contents Design					
Drone Avionics		2	-	X	0	
Humanities and Social Sciences	Business	· Accounting	2	2	0	0
		· Service Marketing				
		· Business & Finance				
		· Global Business				
	Hotel, Airline Service & Global Tourism	· Hotel & Airline	2	2	0	0
· Global Tourism Foreign Language						
· Global Culinary Arts						
Department of Social Welfare		2	2	X	0	
Department of Early Childhood Education		3	1	X	0	
Natural Science	Department of Nursing		4	1	X	X

Academic Schedule

Semester	Duration Period
Spring	March - June
Fall	September - December

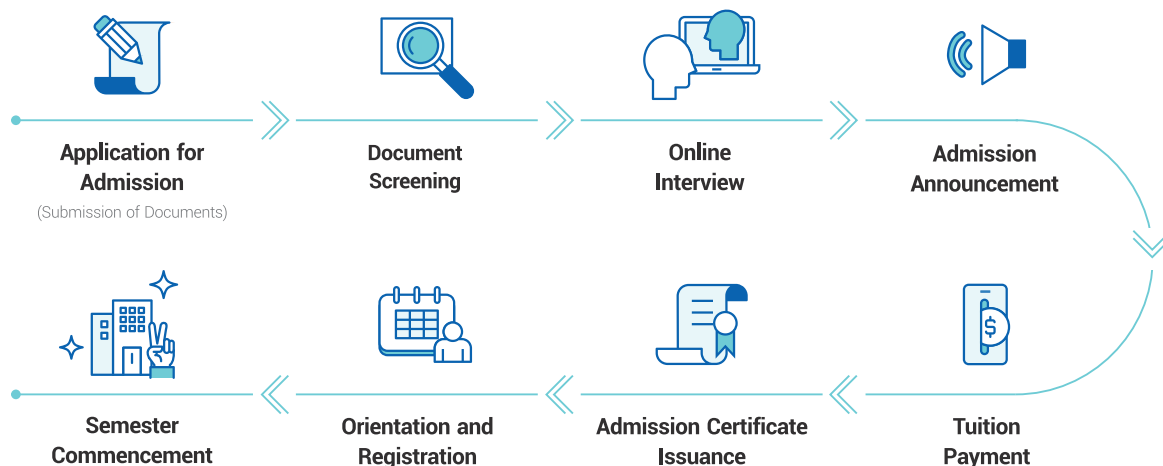
* The academic schedule may change depending on certain circumstances.

Tuition & Fees

(1,300 KRW = 1 USD)

Schools & Departments	Entrance Fee	Tuition (semester)	Tuition (annually)
· Computer Information · Computer Aided Mechanical Engineering	\$700	3,201,000 KRW (approx. \$2,462)	6,402,000 KRW (approx. \$4,925)
· ICT Semiconductor & Electronics · Electrical Engineering · Architecture & Interior Design · Contents Design · Drone Avionics		3,197,000 KRW (approx. \$2,459)	6,394,000 KRW (approx. \$4,918)
· Business · Hotel, Airline Service & Global Tourism · Social Welfare · Early Childhood Education		2,516,000 KRW (approx. \$1,935)	5,032,000 KRW (approx. \$3,871)

Admission Process



Application Period

Semester	Period
Spring	1 st Application Period : at the start of October – at the end of October
	2 nd Application Period : at the start of December – at the end of January
Fall	1 st Application Period : at the start of June – at the end of July

* The application schedule may vary depending on certain circumstances. Please refer to the recruitment guidelines for more details.

Admission Standards

Category	Freshmen Admission	Transfer Admission
Nationality	A student whose parents are both non-Korean nationals.	
Korean or English Proficiency	Korean Proficiency - A student must meet one of the following requirements: <ol style="list-style-type: none"> TOPIK Level 2 or higher Certificate of Completion (Level 2 or higher) from a Korean University's Language Institute Korean language ability through self-learning equivalent to TOPIK Level 2 or higher (subject to a proficiency test at the interview) 	
	English Proficiency - A student must meet one of the following requirements: <ol style="list-style-type: none"> TOEFL 530/iBT 71 or higher English ability corresponding to TOEFL 530/iBT 71 (subject to English proficiency test) (Students in countries that use English as their official language do not need proof of proficiency.) * Only Schools & Departments (English track) are applicable.	
Academic Background	High School students scheduled to graduate prior to enrollment.	University/College students who have completed at least 1 year of study at a different institution in Korea or abroad.

Submission of Application Documents and Inquiry



(Korea) Office of International Cooperation, Main Building #115,
 Yeungjin University, 35 Bokhyeon-ro, Buk-gu, Daegu, 41527, Republic of Korea
 (USA) Yeungjin University US Office, 11 Bristlecone Irvine, CA, 92620, United States

(Korea) +82-53-940-5625, 5630, 5632
 (USA) +1-323-707-6060
 intl@yju.ac.kr

Scholarships for International Students



Admission Scholarships

01. Scholarship for Applicants from a Partner Institution

Entrance fee is 100% waived for students who have been recommended from Yeungjin's Partner Institutions.

02. Global Zone Scholarship

Global Zone Scholarship provides students with opportunities to participate in Global Zone activities, and they can receive the best scholarship offers.

Scholarship	Schools & Departments	Applicable to		Scholarship		
		Freshmen	Transfer (1-year course)	Tuition	Dormitory	Monthly Allowance
IPDO-SEONMAE	- Computer Aided Mechanical Engineering - ICT Semiconductor & Electronics	×	○	100% Waived	Free Offer (Except Utility Fees)	700,000 KRW/month * 11 months = 7,700,000 KRW
BAEKHO	All Schools & Departments	○	○	30% Waived	Free Offer (Except Utility Fees)	Field of Engineering 700,000 KRW/month * 11 months = 7,700,000 KRW
						Field of Humanities and Social Sciences 600,000 KRW/month * 11 months = 6,600,000 KRW
FRONTIER	All Schools & Departments	○	○	30% Waived	Free Offer (Except Utility Fees)	300,000 KRW/month * 11 months = 3,300,000 KRW

* Global Zone: A total of 13 activity rooms where Korean and international students can partake in several cultural and language exchange activities on campus.

* Freshmen students will receive a 23 month allowance.

* The Global Zone Scholarship is for students who are selected in the admission process as a Global Zone/English Village scholarship student.

* **Global Zone Scholarship students cannot receive a GPA-Based Scholarship at the same time.**

* Please check out the detailed information in the Yeungjin admission guideline.

GPA-Based Scholarship

Scholarships are provided to international students with excellent academic ability. This is based on the previous semester's GPA.

* GPA Scale: 0-4.5

GPA of the Previous Semester	Scholarship Offer (per semester)
Average GPA 4.2 - ≤ 4.5	100% Tuition Waived
Average GPA 4.0 - < 4.2	70% Tuition Waived
Average GPA 3.7 - < 4.0	50% Tuition Waived
Average GPA 2.5 - < 3.7	30% Tuition Waived
Average GPA 2.0 - < 2.5	20% Tuition Waived

* The scholarship will come into effect the subsequent semester.

* GPA-Based Scholarships are not for incoming freshmen students.



Korean Language Program

The Korean Language Program at Yeungjin University provides courses for International Students who are interested in learning the language.

One semester is composed of a 10-week course, with a total of 4 semesters.

Curriculum

Program Admission

TOPIK Certification

(TOPIK Level 3 in approximately 9 months)

Admission to a Degree Program

- Eligible for Associates Degree course – *TOPIK Level 2 or higher
- Eligible for Bachelors Degree course — *TOPIK Level 3 or higher

*TOPIK – Test of Proficiency in Korean



Application Schedule by Semester

Semester	Application Deadline	Semester Period (10 weeks)
Spring	End of February	March to May
Summer	End of May	June to August
Fall	End of July	August to November
Winter	End of October	November to February

* Students living abroad should apply 1 month prior to the start of the semester.

Class Timetable

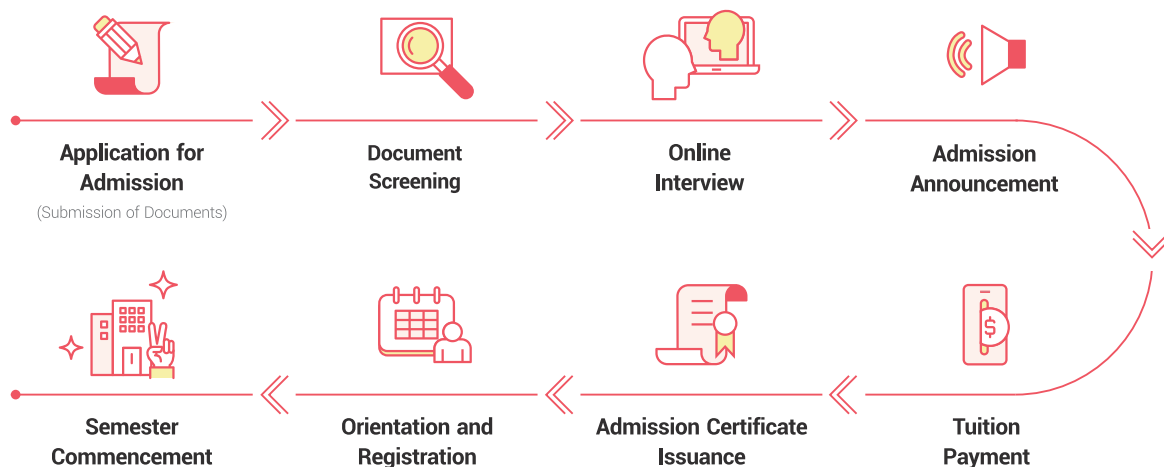
Schedule	MON	TUE	WED	THU	FRI
Time (09:00-13:00)	Reading	Reading	Reading	Reading	Reading
	Writing	Writing	Writing	Writing	Writing
	Speaking	Speaking	Speaking	Speaking	Speaking
	Listening	Listening	Listening	Listening	Listening

* Levels 1-6 are operated under the same schedule.

* Special Korean Conversation Classes will be scheduled during Summer and Winter semesters.

* Specific schedule and content may vary depending on certain circumstances.

Application and Admission Process

10
11

Program Tuition Fee

(1,300 KRW = 1 USD)

Category	For 3 months (one semester)	Notes
Tuition Fee	1,000,000 KRW (approx. \$769)	Tuition fee does not include textbooks.

Submission of Application Documents and Inquiry



(Korea) Office of International Cooperation, Main Building #115,
Yeungjin University, 35 Bokhyeon-ro, Buk-gu, Daegu, 41527, Republic of Korea

(USA) Yeungjin University US Office, 11 Bristlecone Irvine, CA, 92620, United States

(Korea) +82-53-940-5625, 5630, 5632
(USA) +1-323-707-6060

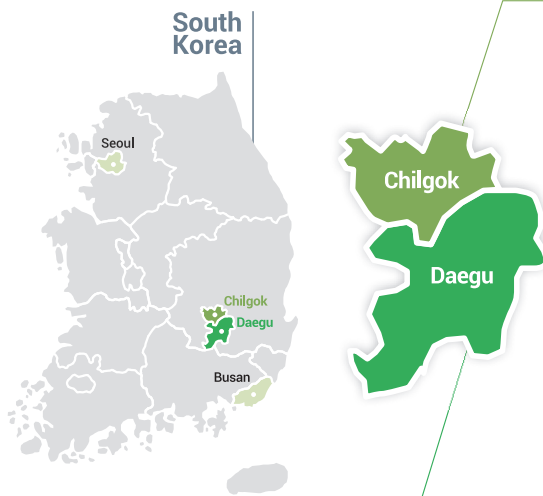
✉ intl@yju.ac.kr

Housing Information for International Students



Category	Room Type	Cost per Semester	Notes
Yeungjin Ville (Near Main Bokhyeon Campus)	2 people per room	930,000 KRW (approx. \$715) (6 months)	Equipped with a personal kitchen, washing machine, refrigerator, air conditioner, free internet, and a private bathroom
	1 person per room	1,680,000 KRW (approx. \$1,292) (6 months)	
Yeungjin Dormitory (Near Main Bokhyeon Campus)	2 people per room	760,000 KRW (approx. \$585) (4 months)	Cooking facilities unavailable (2,500 - 4,000 KRW per meal at YJU cafeteria)
	4 people per room	600,000 KRW (approx. \$462) (4 months)	
Global Dormitory (On Global Campus)	2 people per room	680,000 KRW (approx. \$523) (4 months)	Cooking facilities unavailable (2,500 KRW per meal at YJU Global cafeteria)

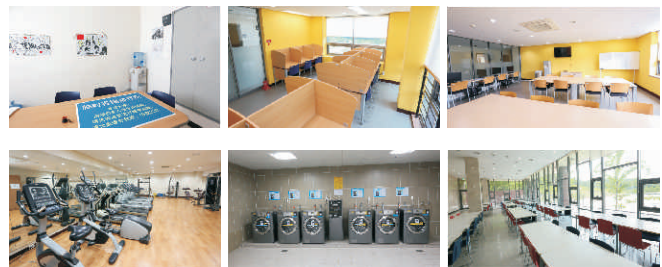
(1,300 KRW = 1 USD)



Global Dormitory Facilities



Yeungjin Dormitory Facilities





Application Requirements

Required Documents (mandatory : ○, optional : △)



Required Documents	Category			Notes
	Korean Language Program	Associates Degree		
		Freshmen	Transfer	
Application Form	○	○	○	
Self-Introduction and Study Plan	○	○	○	
Photocopy of Passport	○	○	○	
Photocopy of Foreign Registration Card (both front and back side)	△	△	△	Only for applicants currently in Korea
Certificate of Language Proficiency	△	△	△	TOPIK / TOEFL or other Language Proficiency Certificates
Certificate of Completion (or expected) and Transcript of a Korean Language Institution	△	△	△	Only for students with Korean language learning experience in a Language Institute of a Korean University
Official University/College Graduation Certificate (or expected graduation certificate)	△	—	○	
University/College Transcripts	△	—	○	
High School Graduation Certificate (or expected graduation certificate)	○	○	○	Translated into Korean or English with its notarial certificate
High School Transcripts	○	○	○	
Family Relationship Certificate	△	○	○	



The Yeungjin Buddy Program

If you want to make
new Korean friends,
come here!

This program was created to help international students adapt to Korean school life and culture. Students will be grouped with local Yeungjin Students, and participate in cultural exchange activities.



Various Programs for *International Students*



Korean Cultural Experience Program

Let's go on
a Korean cultural tour!

This is a program to explore Korean cultural sites and attractions with Korean students. You also have the opportunity to wear a Hanbok (Korean traditional attire)!



Yeungjin International Students' Day

Hey! Listen to
my Korean life experiences!

This is a program to enhance international students' ability to adjust to Korea and help them to adapt to university life by sharing life stories and activities.



Korean Industry Tour Program

I want to get a good job!
How about a Korean company?

This is a program to enhance the job skills of international students by exploring domestic companies, and helping them understand their major-related employment opportunities.



Yeungjin Exhibition

Introduce your culture
to Yeungjin students!

This is a program that encourages international students to display their own work and share their unique culture. This helps to promote community and international relationships.



Experience Korean food, clothing, and accommodation

I'm curious about Korean food,
clothing and accommodation!

This is a program that offers Korean cultural experience events for international students.



Korean Language Speech Contest

I want to show you
my Korean language skills!

This is a program where international students compete in a Korean language speech competition. This helps improve students' Korean language and presentation skills.





Follow us on
[instagram.com/
oic_yju](https://www.instagram.com/oic_yju)



Follow us on
[facebook.com/
oicyju](https://www.facebook.com/oicyju)



Follow us on
[twitter.com/
OIC_yju_](https://twitter.com/OIC_yju_)



The Pioneer of Customized Education

YEUNGJIN UNIVERSITY



Bokhyeon Campus (main)

35, Bokhyeon-ro, Buk-gu,
Daegu, 41527, Republic of Korea



Global Campus (satellite)

60, Geumsong-ro, Songjeong-ri,
Jicheon-myeon, Chilgok-gun,
Gyeongsangbuk-do, 39866, Republic of Korea



US Office

Yeungjin University US Office, 11 Bristlecone Irvine, CA, 92620, United States



(Korea) +82-53-940-5625, 5630, 5632
(USA) +1-323-707-6060



intl@yju.ac.kr

The information in this brochure is subject to revisions or changes.
You will find the most up-to-date information on the Yeungjin University website.

www.yju.ac.kr